



# McLOUIS





# McLouis, just starring

McLouis is the brand for those who are looking for a comfortable, modern and attractive design motorhome that makes them feel special. Anticipating trends, dictating fashion: this is one of the main goals of McLouis.

The alchemy between Italian style, living comfort and design ability gives rise to highly distinctive motorhomes, where the stylistic signature of the McLouis brand is always clearly recognisable.

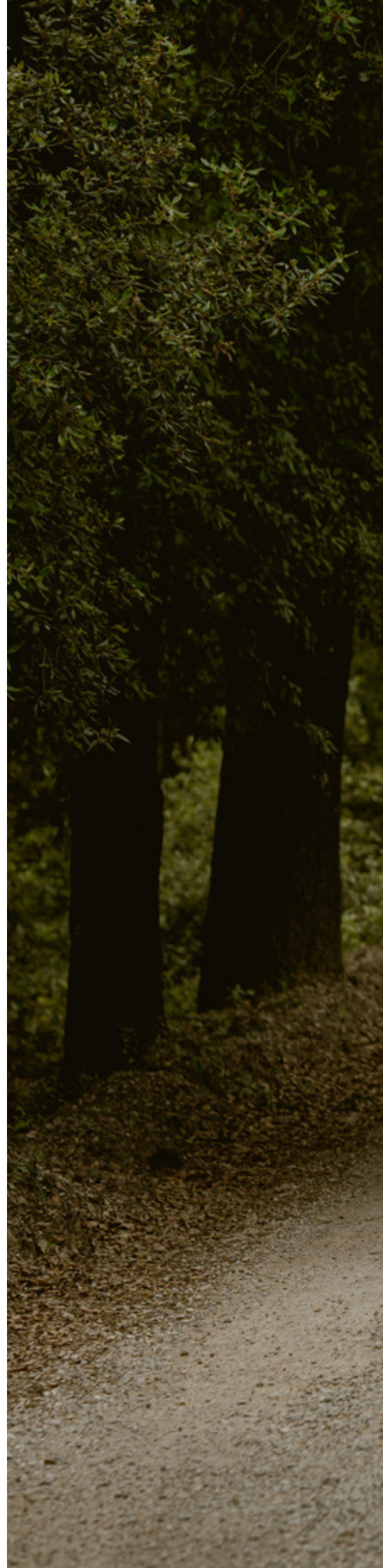
## The history

McLouis was born in 1999 when the number of people approaching the world of plein-air was on the rise. Specialised in the production of motorhomes, semi-motorhomes and overcabs, McLouis interprets Italian taste, attentive to the dictates of fashion and interior design in terms of colours, materials, shapes.

It presents a wide range of products, varied layouts to precisely meet the needs, tastes and preferences of every traveller. McLouis has accompanied thousands of motorhome owners on their way to maturity, proving to be an excellent travel companion and to be able to respond promptly to developments in travelling tourism.

## Close to you, everywhere

The McLouis sales network today consists of over 200 qualified distribution partners, spread throughout Europe. Through pre- and after-sales services, local staff and on-site distribution agencies, McLouis is able to satisfy even the most demanding customers.







Some of the features shown do not correspond to the final features of the vehicle for the current season.









# THE PROMISES FROM **MCLOUIS**

- ★ **A wide-ranging and dynamic offer** whose innovation and research activities allow to respond timely to the evolution of travelling tourism and the needs of every motorhome owner, from large families to couples
- ★ Volumes, furnishing and accessories are rationally designed to travel and live aboard your McLouis with **maximum comfort**
- ★ McLouis interprets and enhances **Italian taste** through the design of environments, materials and shapes, taking care of every little detail. The McLouis **style** is unmistakable
- ★ Always **fashionable**: McLouis environments - modern and elegant - keep up with the interior design new trends
- ★ The **reliability** of a well built vehicle with a **10-year guarantee against infiltration**, high-performance materials and state-of-the-art manufacturing processes



**The promise of reliability**  
**10-year guarantee against infiltration\***

**McLouis branded quality lasts over time.**

\*Carry out regular maintenance at the authorised McLouis network and the tests provided for the control of infiltration during the service coupons as per the specific deadline specified in the warranty booklet. For further information on conditions and terms, please contact the authorised sales network.

# INDEX

Offering _____	p.10
2024 range _____	p.12
Series 300 _____	p.14
Series 800 _____	p.40
Construction technology _____	p.68
Garage and stowage _____	p.70
Upholstery _____	p.72
Tests and checks _____	p.74
Safety and mechanical parts _____	p.76





## Interactive catalogue



This catalogue is an interactive tool that you can consult anywhere from any digital device.

By clicking on the icons on the pages, you will access to extra content, such as technical product information, videos, photos, insights and interesting facts.

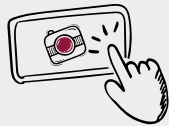
In the next months this brochure can be upgraded and enriched with new contents. Don't miss out on what's new in the world of McLouis and download the latest editions of the catalogue as we make them available.



## KEY TO THE ICONS



Go to 360° views



Browse the photo gallery



Watch the video



See the McLouis.com website



Download the technical data sheets

## Follow McLouis on social channels

to find out what's new, share your opinion and tell  
your experience. We are waiting for you!



**Two ranges, two different ways to be a protagonist!**

Write with McLouis the story of your next adventure.

## SERIES 300



### **SERIES 300 PROTAGONIST IN STYLE AND VERSATILITY**

Cosy, multifunctional spaces, excellent standard equipment and high-quality materials make 300 Series able to satisfy new travellers as well as the most experienced and demanding motorhome owners.

300 series is available on Fiat, Citroën and Peugeot chassis and features 3 Glamys overcab models and 8 Mc4 low-profile models with elevating bed.





# SERIES 800



## **SERIES 800** **PROTAGONIST IN COMFORT AND** **EQUIPMENT**

Dedicated to motorhome owners who want to be recognised, the 800 series is the highest expression of McLouis style. The highest level of comfort and functionality is combined with excellent interior design and a wealth of standard equipment to offer a complete and exclusive travel experience.

7 low-profiles with elevating bed available on Fiat or Citroën chassis and 4 motorhomes on Fiat chassis.



**McLouis is VAN as well!**  
Discover the Menfys range in the VAN 2024 Catalogue.

## GLAMYS

### GLAMYS 320



8 | 6

6,99 m

### GLAMYS 322



7 | 7

6,99 m

### GLAMYS 365

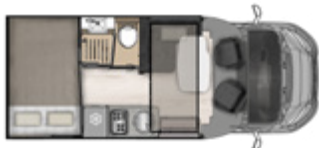


5 | 5

6,99 m

## Mc4

### Mc4 331



3 (+1 OPT) | 4

5,99 m

### Mc4 321



2 (+2 OPT) | 4 (+1 OPT)

6,99 m

### Mc4 339



3 (+1 OPT) | 4

6,69 m

### Mc4 360



4 (+1 OPT) | 4 (+1 OPT)

6,99 m

### Mc4 365



4 (+1 OPT) | 4 (+1 OPT)

6,99 m

### Mc4 373



4 (+1 OPT) | 4 (+1 OPT)

7,45 m

### Mc4 379



4 (+1 OPT) | 4 (+1 OPT)

7,45 m

### Mc4 381



4 (+1 OPT) | 4

7,45 m



# series 800

## THE 2024 RANGE

### MC4 FIAT

**Mc4 860**



5 | 5

6,99 m

**Mc4 865**



5 | 5

6,99 m

**Mc4 875**



5 | 5

7,43 m

**Mc4 870**



4 (+1 OPT) | 4

7,45 m

**Mc4 873**



5 | 5

7,45 m

**Mc4 879**



5 | 5

7,45 m

**Mc4 881**



4 (+1 OPT) | 4

7,45 m

### NEVIS FIAT

**NEVIS 870**



4 (+1 OPT) | 4

7,45 m

**NEVIS 879**



5 | 5

7,45 m

**NEVIS 873**



5 | 5

7,45 m

**NEVIS 881**



4 (+1 OPT) | 4

7,45 m

Would you like to have more information?

Download the technical data sheets of all McLouis models.





# SERIES 300 3

## DEDICATED TO THOSE WHO LOVE CONTEMPORARY STYLE

The 300 series is a brand new range, designed for those who love contemporary style and minimalist design but do not renounce driving and living comfort. 300 series is available on Fiat, Citroën and Peugeot chassis and features 3 Glamys overcab models and 8 Mc4 low-profile models with elevating bed.

Comfortable, cosy and functional, the 300 series vehicles reflect the unmistakable McLouis style and are characterised by meticulous attention to aesthetics and high-performance materials, a guarantee of value and durability.



# The promise of the **300** SERIES

## STYLE

### Contemporary style, minimalist design

A range recognizable from the first glance thanks to the captivating gray external walls and its modern and dynamic graphics, a reference to the elegant anthracite of the interiors.

The 300 series offers modern and cosy spaces, aligned with current trends and featuring clean, essential lines. Its interior is distinguished by the eye-catching contrast of neutral, light and bright solid colours with darker anthracite elements.

The use of innovative materials, such as the Fenix effect on the kitchen worktop, allows functionality and design to be combined in an extraordinary way. The fabric effect walls and white wall units with a glossy finish and contrasting anthracite horizontal pattern give a glamorous touch to the room, matching the unmistakable McLouis style.

The clean lines of the wall units and furniture also extend to the panels and decorations, ensuring a harmonious and pleasing design, while the elegant wood-effect flooring adds warmth to the room, creating a cosy and comfortable atmosphere, like your home.



\* Not available on Glamys 365, Mc4 331, 339 and 365

\*\* Mc4 331 excluded





## **COMFORT**

### **Comfortable and multifunctional interiors**

The rooms of the 300 series are comfortable and multifunctional, thanks to an intelligent and rational use of space that provides versatile and flexible living solutions.

In the spacious living area, which is bright and well ventilated thanks to Seitz skylights and windows, ease of movement is ensured by the central or folding top table, which makes it easy to reach every corner of the dinette.

In the bathroom, the clothes rail\* in the shower transforms the shower space into a convenient wardrobe for storing long and bulky clothes. An ideal solution for sports people, for storing a wetsuit after a dive or a ski suit after a day on the snow.

The sleeping area is designed to offer a comfortable rest thanks to the convenient wooden slats and the large bed. On the middle and garage beds\*\*, the electric or manual height adjustment allows you to adjust the height of the bed for more space in the room or garage, depending on your needs.

## **DYNAMICS**

### **Intelligent use of space**

The 300 series offers a wide and dynamic choice of layouts and types with lengths ranging from 5.99 metres of the very compact Mc4 331 up to 7.45 metres of the widest low-profiles with elevating bed and motorhome models, perfectly suited to the evolution of contemporary travelling and living.

From the Glamys overcabs, which offer beds for up to 8 people and are perfect for crews and larger families, to the Mc4 low-profile models with elevating bed, designed for couples, the 300 series is ideal for those who want maximum space and comfort for their holidays.

A flexible offer, united by the use of high-performance materials and state-of-the-art production processes. From the living to the sleeping area, McLouis designers were able to create cosy, comfortable spaces and intelligent living solutions to meet a variety of needs.

\* Not available on Glamys 365, Mc4 331, 339 and 365

\*\* Mc4 331 excluded













LIVING AREA

# Maximum comfort and functionality

*The 300 series offers a cosy, bright and well-ventilated living area with a modern and essential design. Each space has been carefully designed to ensure maximum functionality without compromising comfort.*



## LIVING AREA

- Fabric effect walls
- Fabrics and imitation leather panels
- Panel with quilted fabric under elevating bed
- LED profiles for dinette seats
- Dinette with swivel seats that integrate into the living area\*
- Table with glossy white top and anthracite leg
- Central table or folding top table, allows easy access to every seat in the dinette
- On Glamys 365: elevating overcab for a more spacious living area
- On Mc4: electric elevating bed
- Roman blinds



\* Swivel seats not available in Glamys 320 and 322







Glamys 322

## KITCHEN

# Enjoy your meal!

Cooking is a true pleasure in the 300 series! The two-burner cooking area makes optimal use of space, providing ample work and storage space in the kitchen for preparing dishes or for conveniently storing cutting boards, containers and other accessories. The Fenix effect gives the kitchen worktop a modern elegance and extraordinary durability, making every cooking experience a timeless pleasure.

Generously sized wall units and large drawers provide practical and rational storage for all your dishes and crockery. The convenient spice rack and hooks for tea towels and sponges further increase functionality, allowing you to always have essential ingredients and utensils at hand.







Glamys 322





Mc4 373





Mc4 373

## KITCHEN

- Two-burner hob with large working space
- Practical spice rack with hooks for tea towels and sponges
- Spacious wall unit with shelf for pantry and stowage
- Lower vertical door
- Large drawers, the top one with inner tray for cutlery and accessories
- 137 litre refrigerator with separate freezer and outer bottle drawer (145 litre on Mc4 321)
- Bright LED details



## SLEEPING AREA

# Designed for a comfortable rest



The sleeping area has been designed to ensure a peaceful and regenerating sleep, managing to reconcile the freedom of movement with the importance of ensuring ample and comfortable spaces. The central beds of 150 cm provide large space to sleep well and allow you to move with agility around the bed. The large twin beds have at least one bed 2 meters long, even in vehicles less than 7 meters, ensuring maximum comfort for moments of rest.

The environment is comfortable and bright thanks to the large windows and the rear porthole. On the sides of the bed the spotlights with usb sockets, perfect to charge the phone and enjoy a good reading before falling asleep.









Mc4 379



Mc4 373



## SLEEPING AREA

- Real bed bases with slats for maximum comfort
- Breathable mattresses
- Large twin beds: at least one of the two beds with a length of 2 metres, also in vehicles shorter than 7 metres
- Central bed of 150 cm: space to sleep well, space to move better around the bed with agility
- Electric or manual bed height adjustment on central and transversal beds (except Mc4 331). Adjust the bed height for more space in the room or garage, depending on your needs.
- Conversion of twin beds into a maxi double bed
- Large wardrobes, large linear wall units and vertical doors for clothes and accessories
- Stowage under the steps
- Elevating bed bases with stowage under slats
- Partition curtain between living and sleeping area\*



Mc4 379

\* Only available for some models







## BATHROOM

# To take care of yourself

*Inside the convenient bathroom it will be easy to take care of yourself. You can store everything in its place thanks to the wall unit with push-lock door and enjoy the comfort of the large mirror illuminated by spotlights, accompanied by a practical vanity top with toothbrush holder and soap dish. The spacious shower, either freestanding or integrated with rigid methacrylate doors, will make you feel at home.*

Mc4 379

## BATHROOM

- Large mirror lit by spotlights
- Large shower, independent or integrated and separated by rigid methacrylate doors
- Clothes rail in the shower\*
- Independent shower with rigid door or integrated with rigid partition doors
- Stowage wall units and large shelves
- Porthole for lighting and ventilation

\* Not available on Glamys 365, Mc4 331, 339 and 365



Mc4 322





Mc4 373

## CHASSIS

- Fiat Ducato 2.2 MJ 140 HP, emission class EURO 6D
- Citroën Jumper / Peugeot Boxer 2.2 140 HP, emission class EURO 6D
- Maximum number of standard type-approved seats on Glamys overcabs
- Cab swivel seats\*
- Manual climate control
- Driver and passenger airbags
- Cruise control
- Start & Stop
- ESC
- Painted bumper
- Radio preparation with DAB aerial
- 15" steel wheel rims



## ON-BOARD TECHNOLOGY

- LED interior lighting
- LED lights under the wall units
- LED dot on the handle at the entrance
- USB sockets in the living and sleeping area
- CP Plus control panel
- Gas heating COMBI 4
- Heating in the overcab area
- Electric or manual bed height adjustment on central and transversal beds (except Mc4 331).
- Smart TV 24" and wifi router (available as OPT)

\* Swivel seats not available in Glamys 320 and 322

Some of the features shown do not correspond to the final features of the vehicle for the current season.





## EXTERIORS

- XL\*\* entrance door, with mosquito net
- Wide integrated step
- Double glazed Seitz windows, fly screen and blind
- Three standard skylights: two 40x40 cm skylights and one 28x28 cm bathroom skylight
- XXL garage with load capacity up to 300 kg and double access. Illuminated and heated
- LED external light
- 10-year guarantee against infiltration

\*\*XL door not available in Glamys 222

## EXTERIORS

- Gray external walls, attractive and recognizable style
- Dynamic and modern graphics, recall to the anthracite color of the interior











SERIES

800

## THE HIGHEST EXPRESSION OF MCLOUIS STYLE

Designed to satisfy even the most demanding customers with its exceptional living comfort, high-quality interior design and well-thought-out details, the 800 series consists of 7 Mc4 low-profile with elevating bed models, and 4 Nevis motorhomes.

Thanks to the generous standard equipment and the excellent on-board technology, you can enjoy maximum well-being both on the road and during your stay, without regretting comforts.



# The promise of the **800** SERIES

## STYLE

### Harmonious design, high quality

Luxurious, exclusive and elegant spaces make the 800 series the ultimate expression of Mclouis style.

The interiors of the 800 series are featured by the dark colour of the wood with contrasting “glossy cream” surfaces: a refined colour play that makes the room look high-quality and exclusive.

The high-quality premium upholstery is enhanced by quilted sections in natural shades of cream, beige and hazelnut - elegant colours that are easy to match with your favourite accessories and furnishings.

## COMFORT

### Softness that seduces

In the bright living space, the 800 series takes care of your well-being with its upholstery and soft, ergonomically designed, high-comfort seats, ideal for enjoying a snack or relaxing in front of the TV.

In the sleeping area McLouis comfort is at its best: here you can rest and sleep relaxed thanks to the extra-comfortable mattress, the slatted base and the generously sized beds.

The soft-touch coating on the walls and ceiling of the room promotes sleep and contributes to a soft, inviting environment with excellent thermal and acoustic insulation.





## **DYNAMICS**

### **Flexibility for all your needs**

The 800 series range includes both low-profile models and motorhomes with lengths varying from 6.99 metres to 7.45 metres: generous volumes, plenty of space, to make your holiday comfortable.

A great deal of attention is paid to functionality and practical everyday use: the Mc4 865 model offers a variable volume toilet: thanks to the rotating washbasin wall, you can modulate the space according to your needs and have a larger toilet or a larger shower.

The electric elevating bed on models with a central bed and the manual one on the Mc4 860 allow for the adjustment of the height of the bed for more space in the room or garage, depending on your needs.









## LIVING AREA

# The details that make all the difference

The interiors of the 800 series combine the elegance of natural colours with rich stylish details that make the environment precious and exclusive.







## LIVING AREA

- Large windows and portlight
- Wide choice of upholstery fabrics
- Seat covers coordinated with the upholstery
- Soft-touch coating on ceiling
- Dark wood interiors and “glossy cream” contrasting surfaces
- LED profiles
- Dinette with swivel seats that integrate into the living area



Soft-touch coating on ceiling







Mc4 881

- Polished laminate table with wooden profile
- Elegant chromium-plated leg, replaced by a height-adjustable leg when converting the dinette into a bed
- Folding top table in face-to-face models and central table for other layouts. Both are sliding and 360° rotating
- Practical button on the floor to lower the table in the night conversion \*
- TV holder for monitors up to 32"



\* In models with dinette bed conversion as standard







KITCHEN

## Wear the chef's clothes

The 800 series kitchen is ideal for testing your skills, thanks to the three-burner hob, stainless steel sink and large work surfaces.

The kitchen panel is equipped with spice rack and convenient hooks, so you always have everything you need at hand.

Stowage is particularly important in the kitchen: thanks to the wall units - with double shelves - large drawers and baskets you can organize the pantry and accessories in a rational way.

Nevis 881

## KITCHEN

- Three-burner hob in line with glass cover
- Drawers with handle
- Kitchen panel equipped with spice rack and useful hooks
- Folding surface, handy additional laying surface
- Spacious wall unit with shelf for pantry and stowage
- 145 l double door refrigerator with separate freezer in vehicles over 7 metres







SLEEPING AREA

# Room for dreaming



The bedroom is designed to offer maximum comfort during the night thanks to the large beds, equipped with wooden slatted bases and soft mattresses.





BEDROOM

McLOUIS





Soft-touch coating on ceiling and interior walls





## SLEEPING AREA

- Large windows and portlights for better lighting
- Real bed bases with slats for maximum comfort
- Extra-comfortable ergonomic mattresses with layer in memory foam
- Soft-touch coating on ceiling and interior walls
- Large wardrobes and wall units for clothes and accessories
- Rigid door separating the living area from the sleeping area\*
- Central beds, 150-cm wide
- Conversion of twin beds into a maxi double bed
- Electric bed height adjustment on central beds and manual on Mc4 860
- Convenient storage pocket at the foot of the bed

\* Mc4 860 excluded



Nevis 870

## BATHROOM

# Where well-being and style meet

To have everything you need for your daily well-being routine at hand, the toilet - in wood - is equipped with a large wall mirror illuminated by spotlights, a large shelf with toothbrush holder and soap holder.



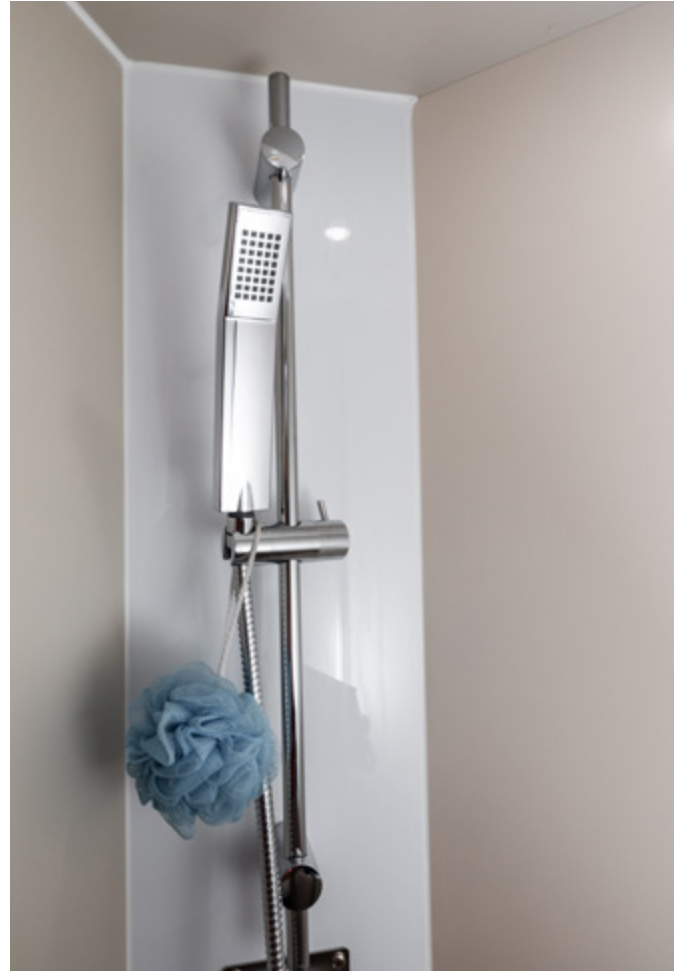




Mc4 881

## BATHROOM

- Large mirror with lighting
- Opaque double glazed window
- Freestanding shower with rigid door or integrated with rigid separating doors or variable volume bathroom (in the Mc4 865 model)
- Stowage wall units and large shelves
- Shower space with coat hanger, becomes a comfortable wardrobe (except Mc4 865)







Nevis 873

## CHASSIS

- Fiat Ducato 2.2 MJ 140 HP, emission class EURO 6D
- Manual climate control
- Driver and passenger airbags
- Cruise Control
- Start & Stop
- ESC
- Cab swivel seats
- Seat covers
- Seat fabric coordinated with the upholstery on Nevis motorhomes
- 15" steel wheel rims
- Rear LED lights
- DRL LEDs on Nevis motorhomes



## ON-BOARD TECHNOLOGY

- LED interior lighting
- LED lights under the wall units
- LED point of light on the handle at the entrance
- USB sockets in the living and sleeping area
- Gas heater COMBI 4
- CP Plus control panel
- Electric bed height adjustment on central beds and manual on Mc4 860
- 32" TV holder
- Smart TV 32" and wifi router (available as OPT)





## **EXTERIORS**

- Painted bumpers
- Panoramic roof on Mc4 low-profile models
- Central locking two-point entry door with fixed window and integrated dustbin
- Entrance door flyscreen
- Double glazed Seitz windows, flyscreen and blind
- XXL garage with load capacity up to 300 kg and double access. Illuminated and heated
- 220 V socket in the garage
- Bus-type rear-view mirrors on Nevis motorhomes
- LED external light
- 10-year guarantee against infiltration

# The motorcaravan tailored to your wishes. A wide range of packages to customise your McLouis according to your preferences.

Dedicated to those who love living outdoors, who do not give up their winter holidays, who want a vehicle equipped with every comfort. **The choice is yours.**

## SERIES 300

### GLAMYS

### MC4



	FIAT	CITROËN/PEUGEOT	PEUGEOT	FIAT	CITROËN/PEUGEOT	PEUGEOT
<b>FIAT TRAVEL PACK- Required on HEAVY chassis</b> Fog lights; Traction+; 16" alloy wheels with composite suspension; black skid plate, grille, headlamp surround; steering wheel controls	x			x		
<b>CITROËN/PEUGEOT TRAVEL PACK</b> Fog lights; Traction+; 16" alloy wheels; steering wheel controls		x	x		x	x
<b>ELEGANCE PACK - FIAT TRAVEL PACK or CITROËN/PEUGEOT TRAVEL PACK required</b> Techno dashboard; TPMS; DRL LED; leather steering wheel and gearbox	x	x	x	x	x	x
<b>FIAT ELEGANCE PLUS PACK - FIAT TRAVEL PACK required</b> Techno dashboard; TPMS; Full LED headlights; leather steering wheel and gearbox	x			x		
<b>EXTRA TECH PACK - FIAT TRAVEL PACK and one of the two ELEGANCE PACKS required</b> Full digital cluster; automatic climate control system; electric handbrake	x			x		
<b>MATIC PACK - TRAVEL PACK required</b> Automatic transmission	x			x		
<b>START PACK</b> Two-part locking door with window and central locking; solar panel; rear-view camera; panoramic roof on Mc4; pleated blind; TV holder; seat covers	x	x	x	x	x	x
<b>ENJOY OUTDOOR PACK</b> External gas socket; hand shower in garage; external media socket (12 V / 220 V / TV), equipped garage wall; awning	x	x	x	x	x	x
<b>EXTRA WARM PACK</b> Truma Combi 6 E; winter pack; step insulation; electrically heated floor	x	x	x	x	x	x
<b>SERIES 300 DIGITAL TV PACK</b> 24" Smart TV; digital antenna	x	x	x	x	x	x
<b>SERIES 300 SATELLITE TV PACK</b> 24" Smart TV; satellite antenna	x	x	x	x	x	x
<b>TV WI-FI PACK</b> 24" Smart TV; Wi-Fi router	x	x	x	x	x	x



## SERIES 300 AND SERIES 800 PACK



### KIT SOGNI DI STILE FOR THE 300 AND 800 SERIES

Make the sleeping area of your McLouis even more cosy, elegant and exclusive.

Choose the Sogni di Stile kit, where each element is tailor-made for each model.

- ★ Bed quilt
- ★ Bed linen
- ★ Pillows with pillowcases



## SERIES 800

**MC4 NEVIS**  
FIAT FIAT

	MC4	NEVIS
<b>FIAT TRAVEL PACK</b> Fog lights; Traction+; 16" alloy wheels with composite suspension; black skid plate, grille, headlamp surround; steering wheel controls	x	
<b>EXPO NEVIS PACK</b> Traction +; 16" alloy wheels with composite suspension; steering wheel controls; solar panel; rear-view camera		x
<b>ELEGANCE PACK - FIAT TRAVEL PACK or EXPO NEVIS PACK required</b> Techno dashboard; TPMS; DRL LED on Mc4*; leather steering wheel and gearbox	x	x
<b>ELEGANCE PLUS PACK - FIAT TRAVEL PACK required</b> Techno dashboard; TPMS; Full LED headlights; leather steering wheel and gearbox	x	
<b>EXTRA TECH PACK - FIAT TRAVEL PACK and one of the two ELEGANCE PACKS or EXPO NEVIS PACKS are required</b> Full digital cluster; automatic climate control system; electric handbrake	x	x
<b>PACK MATIC - FIAT TRAVEL PACK or EXPO NEVIS PACK required</b> Automatic transmission	x	x
<b>EXPO PACK</b> Solar panel; rear-view camera; pleated blind	x	
<b>ENJOY OUTDOOR PACK</b> External gas socket; hand shower in garage; external media socket (12 V / 220 V / TV), equipped garage wall; awning	x	x
<b>EXTRA WARM PACK</b> Truma Combi 6 E; winter pack; step insulation; electrically heated floor	x	x
<b>SERIES 800 DIGITAL TV PACK</b> 32" Smart TV; digital antenna	x	x
<b>SERIES 800 SATELLITE TV PACK</b> 32" Smart TV; satellite antenna	x	x
<b>TV WI-FI PACK</b> 32" Smart TV; Wi-Fi router	x	x

\* LED DRLs already standard on Nevis motorhomes models







NEVIS

8793

McLOUIS

NEVIS

XY 25381

CONSTRUCTION TECHNOLOGY

# McLouis, made to last

Construction technologies, from high performance materials to state-of-the-art production processes.

The body of McLouis motorhomes is manufactured in specialized production departments through high-precision industrial processes that guarantee the highest quality standards.



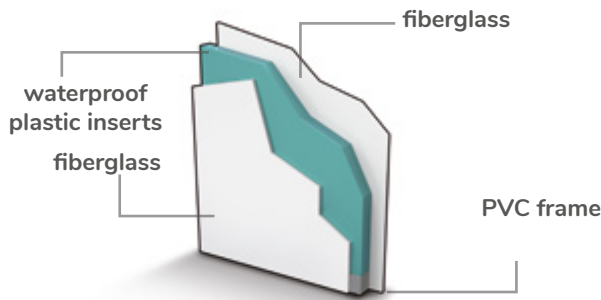
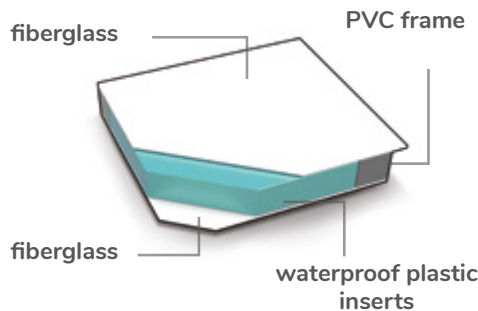
## The construction technology

This technology stands out for the maximum waterproofing and acoustic insulation of the living unit, ensuring better insulation and greater protection against infiltration.

The use of new materials with high insulating performance, such as bicomposite resins, has made it possible to reduce the weight of the body and make it more solid at the same time. More durable, less subject to wear, easier to repair and maintain: the structure of McLouis motorhomes is more resistant to torsion, offering greater stability to the vehicle.

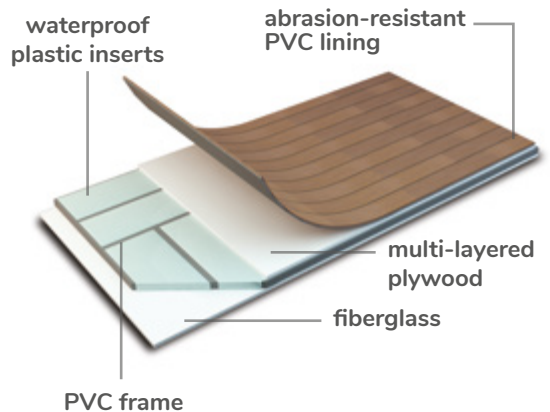
## The body under the microscope

**Roof** formed by a double sheet of fiberglass, external and internal, PVC frame and waterproof plastic inserts, thickness 30 cm.



**Wall** with double sheet of fiberglass, external and internal, PVC frame and waterproof plastic inserts, thickness 30 cm.

**Floor** 54-cm thick, with non-slip, abrasion-resistant PVC lining, consisting of an external fiberglass sheet and internal multilayer, PVC frame and waterproof plastic inserts.





## NOT JUST INSULATION: VENTILATION IS IMPORTANT TOO!

A well built motorhome is not only well insulated from the outside but also well ventilated inside for a healthy, comfortable environment with excellent air quality.



McLouis designers have studied the air conditioning and air circulation inside the vehicles with the aim of standardizing the temperature and avoiding any condensation.



Wall units installed leaving a space from the wall of the motorhome, so that the air is evenly distributed and any condensation or mould is prevented.

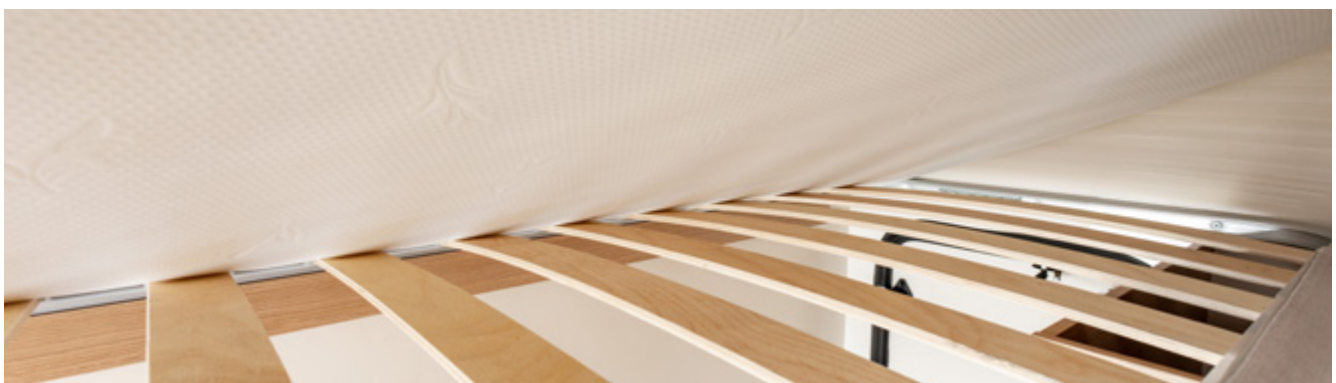
Specific opening for the free circulation of air inside the wall units.



Anti-condensation panels spaced from the wall in the living and sleeping areas for air and heat circulation.



Overcab heated through special vents.



Mattresses with lower cover in technical, quilted breathable fabric. Top and sides made of quilted polyester.

Slats in all beds that let air pass between the base and the mattress.



## GARAGE AND STOWAGE

# Space for your **PASSIONS**

With McLouis the garage and the external stowage compartments allow you to take everything you need for your holiday with you, without having to give up anything.

## THE GARAGE

### THE STRUCTURE

The garage has a lower fiberglass cover to protect the compartment from external moisture and uneven road surfaces, such as gravel.

The interior is waterproof plastic, 30 mm thick, with structural strips for greater rigidity and tightness. The floor is made of linoleum to protect the loading surface from wear and make it easier to clean and maintain.



### ILLUMINATED AND HEATED

The maxi-garage is equipped with light and air vents for heating.

### EASY TO LOAD

Thanks to the double access door that creates a “through” load compartment, accessible from both sides. The doors open at 180° so you can load and unload even the most bulky objects conveniently.

### SAFE

The doors are equipped with a double lock.

### MAXI DIMENSIONS

The load capacity is up to 300 kg (maximum technically loadable weight that affects the approved seats or the remaining total payload).

### FLEXIBLE

The sliding rail bed system in the models with transverse and central beds allows you to have more space wherever you want, in your room or in the garage.

### DURABLE

It is protected from humidity by anti-rain, anti-splash and anti-frost rubber seals to ensure opening even at low temperatures.





## **INTERIORS**

The interiors of McLouis are designed to create the freedom of movement of a luxury suite. The rational organization of the spaces allows the optimal use of every corner.



## **WARDROBES AND WALL UNITS**

All the models offer spacious wardrobes and wall units with shelves and hanger rods, where you can store all your things.

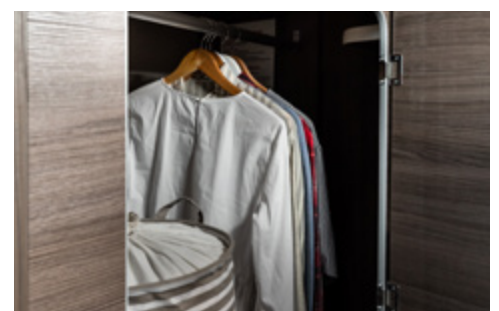


## **LIFTABLE BASES**

With a simple mechanism you can lift the slatted bed bases and have large containers for your clothes and bed linen.

## **COMPARTMENTS IN THE STEPS**

Inside the steps that make it easier to get into the bed, or in the compartments of the chest, we have created comfortable spaces for storing shoes and other accessories.



UPHOLSTERY

# Choose your **STYLE,** customize the interiors.

The fabrics in the McLouis range are inspired by natural tones, from ivory to dove grey, from beige to hazelnut. Relaxing, elegant, easy to match colours to create the atmosphere you want on board your McLouis.

## Standard **300 series** upholstery

The 300 Series offers three premium upholstery types with innovative and distinctive shapes made of high quality fabrics, available in two different colour combinations to customise the living area according to personal taste and preferences.



### **URBAN GREY** (standard)

Fabric and imitation leather



### **URBAN BROWN** (option)

Fabric and imitation leather



### **STREET** (option)

Fabric and imitation leather



## 800 series upholstery

The upholstery features soft, rounded shapes, neutral colours with fabric upholstery, as standard, and optional imitation leather.



### **STEEL** (standard)

Fabric



### **BRONZE** (option)

Imitation leather



### **SILVER** (option)

Fabric and imitation leather

## TESTS AND CHECKS

### Tested safety

At every stage of production, from development to the finished product, McLouis carries out tests and trials in accordance with European standards to offer high quality, safe and reliable vehicles.

The same quality standards are demanded of suppliers: for the most strategic components, a check is carried out on the incoming material and before it is used in production.

### CHECKS IN PRODUCTION STAGE



Test on operation of the gas pipes.

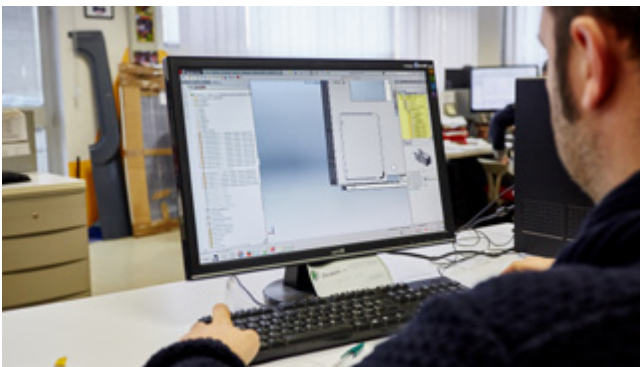


Correct installation of the hydraulic systems.



Check on operation and correct installation of the electrical systems.

### TESTS IN RESEARCH, DEVELOPMENT AND PROTOTYPING STAGE



Specific testing in climate chamber to check the resistance, duration and performance of the materials selected at extremely high/low temperatures.



Performance tests on the components used. Durability of mattresses, resistance to stress, reliability and compliance with European regulations in the design of the seatbelt unit.





Some of the features shown do not correspond to the final features of the vehicle for the current season.

### TESTS ON FINISHED PRODUCT



Waterproofing tests on 100% of the vehicles produced, before delivery.

Electronic weighing of 100% of vehicles before delivery and written weight certification for end customer.



Gas system inspection by certified staff according to the German DVGW protocol.



100 statistical checks out of a percentage of the vehicles produced: aesthetic, functional, noise, assembly tests.

# FIAT

Created from the continuous cooperation with manufactures, Fiat Ducato is the perfect combination of chassis and living unit. There are many presettings to facilitate the transformation, a specific electrical system and a cab designed with reinforced uprights and pre-cut roof.



Euro 6D Final  
140 CV  
180 CV

## STANDARD EQUIPMENT

### MANUAL CAB CLIMATE CONTROL

Enhanced and diffused ventilation to the entire cab

### ESC ELECTRONIC STABILITY CONTROL

**CROSS WIND ASSIST.** Through the use of brakes, intervenes to help stabilize the vehicle through strong crosswinds, helping to keep the vehicle from drifting out of its lane

**TRAILER STABILITY CONTROL SYSTEM.** Detects when a trailer is starting to oscillate and corrects any dangerous trailer swing, through a combination of either torque reduction and/or individual wheel braking

**POST COLLISION BRAKING SYSTEM.** Intervenes in the event of an accident, automatically applying brakes to prevent secondary potential collisions

### ECOPACK

Consisting of:

**START AND STOP SYSTEM:** for reduced fuel consumption. Automatically restarts when the accelerator pedal is touched

**SMART ALTERNATOR:** intelligent alternator that supplies only the power needed

**ELECTRONIC FUEL PUMP:** for energy saving and high fuel efficiency.

### ELECTRIC POWER STEERING SYSTEM

The electric power steering system replaces hydraulic system on **whole range**.

Moreover, the new electric steering system offers:

- Power supply technology adapts steering effort to vehicle speed
- Increased steering precision
- Higher driving pleasure, while reduces effort during parking maneuvers
- Improves fuel consumption and reduce CO2 emissions thanks to the
- Adaptive energy consumption
- Keep current steering ratio
- Engine bay is freed from former hydraulic power steering specific parts.

### DASHBOARD

Ducato offers a dashboard:

- Heavily renovated
- Fully Re-designed
- Featuring new Tech Contents
- Comfortable & User friendly
- New White Backlighting, extended to every single command

### STEERING WHEEL AND GEAR LEVERS

The steering wheel is now a revolution for motorhomes maneuverability: New car-like design - three spoke style.

The gear lever is more ergonomic and rounded, with an elegant glossy finish.



# CITROËN JUMPER / PEUGEOT BOXER

## STANDARD EQUIPMENT

- Manual cab climate control
- ESP
- Cruise Control
- Double Airbag
- Electric heated door mirrors
- Height-adjustable seats with double armrest
- Chrome-plated instrument panel
- Dashboard USB socket + cup holder
- Radio preparation with DAB aerial
- Citroën chrome front grille





Sea S.p.A. operates with an  
Integrated Environment  
and Safety Management System.  
Certificate number: ISO14001: 2939;  
ISO9001: 11841



Ed-01 - EN - 08/2023

Photo: Simone Burchi - Artmine - Roberto Valacchi | Design: Pasquini Associati

McLous reserves itself the right to change the characteristics and the furnishings of all its models with no advance notice required; all data contained in this leaflet must therefore be considered approximate and non-binding. Despite thorough checks of the contents, we cannot exclude possible printing and/or translating errors. This catalogue does not constitute contractual documentation. Any reproduction, including in part, of the text or of the content of this document is prohibited. The indicated weights are exclusively approximated. Tolerances of +/-5 % are allowed. Generally speaking, special equipment and options increase the no-load weight and entail a reduction in the payload. We hereby decline any and all responsibility in case structural changes are made to the vehicle; any assembly, disassembly or changes carried out by unauthorised workshops may jeopardise your safety and cause the warranty clauses to be forfeited. For additional information on installation and technical details, please contact one of our dealers.

**This catalogue does not represent contractual documentation, but only general information.**